



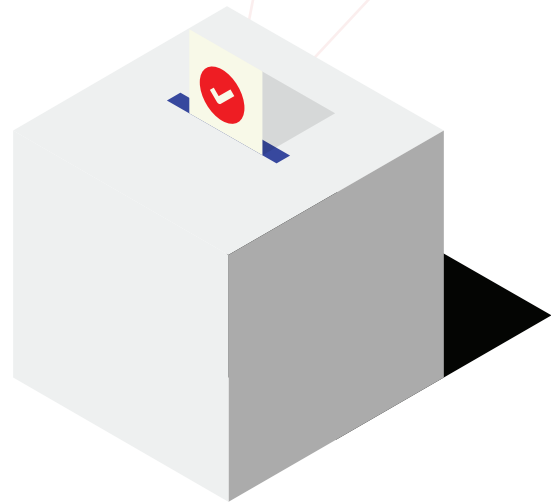
# Your Future Employer, One Vote Away

As public service employees, we cast our vote to choose our next employer. This election is really important and your vote matters.

**Please get out and vote!**

**Are you  
involved  
politically?**

**Take the Test**



**Self Assessment For  
Political Activities**



## **Where To Vote?**

Looking for information on ridings, what document you need to vote and where to vote? Scan this **QR Code** to find out.



## **Electoral Compass**

Don't know where you stand with political parties? Scan this **QR Code** and take the test!



## **Important Information – Paid Time Off to Vote:**

By law, electors must have three consecutive hours to cast their vote on election day. If your hours of work do not allow for three consecutive hours to vote, your employer must give you time off.



If every member and locals band together, we can have a sizeable impact on the federal elections, **elbows up UTE members!**